

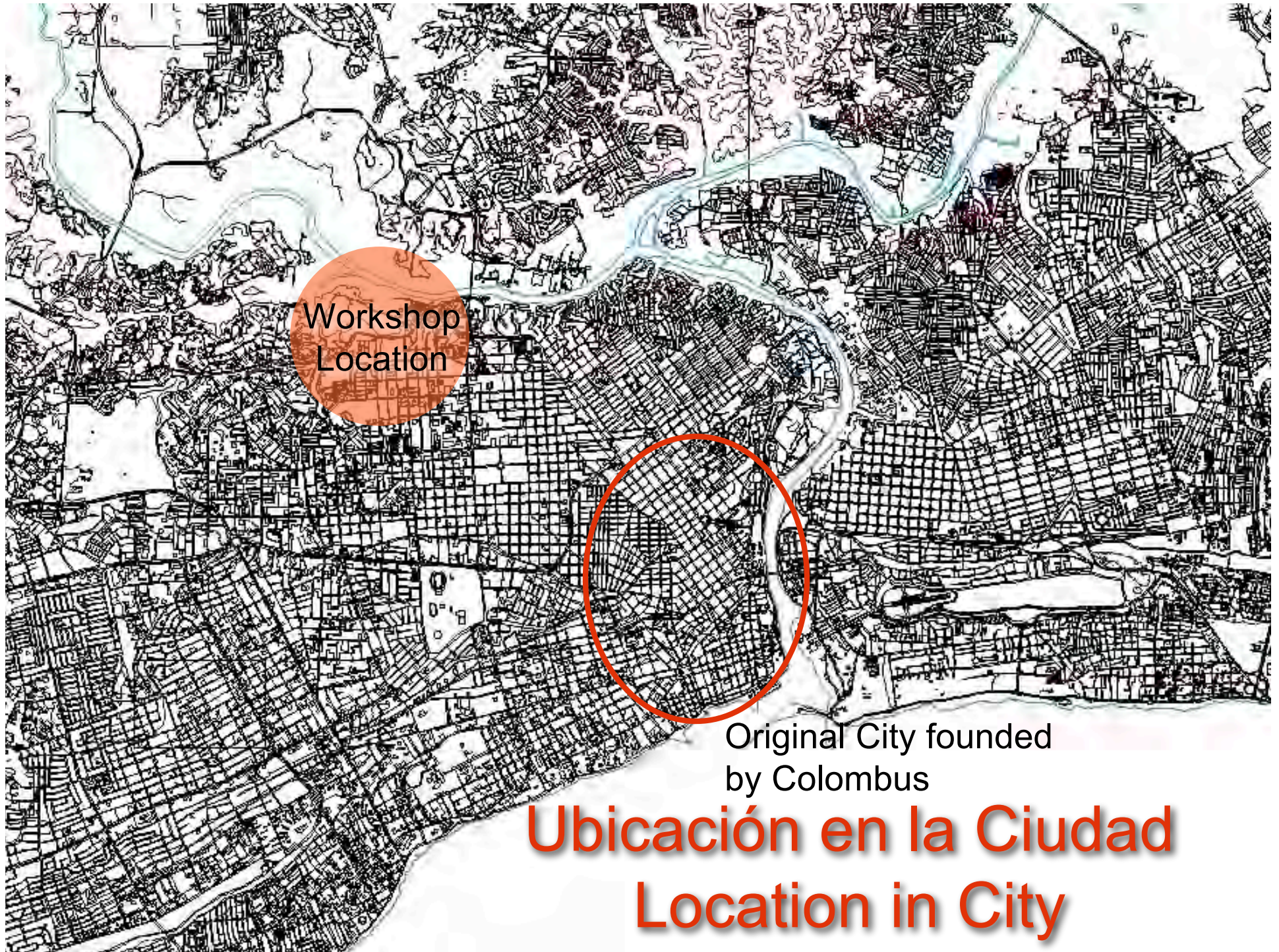
Areas de Trabajo de el taller | Areas of Workshop



La Puya y El Caliche Squatter Communities

SIGUS-MIT Taller Enero 2003
Santo Domingo

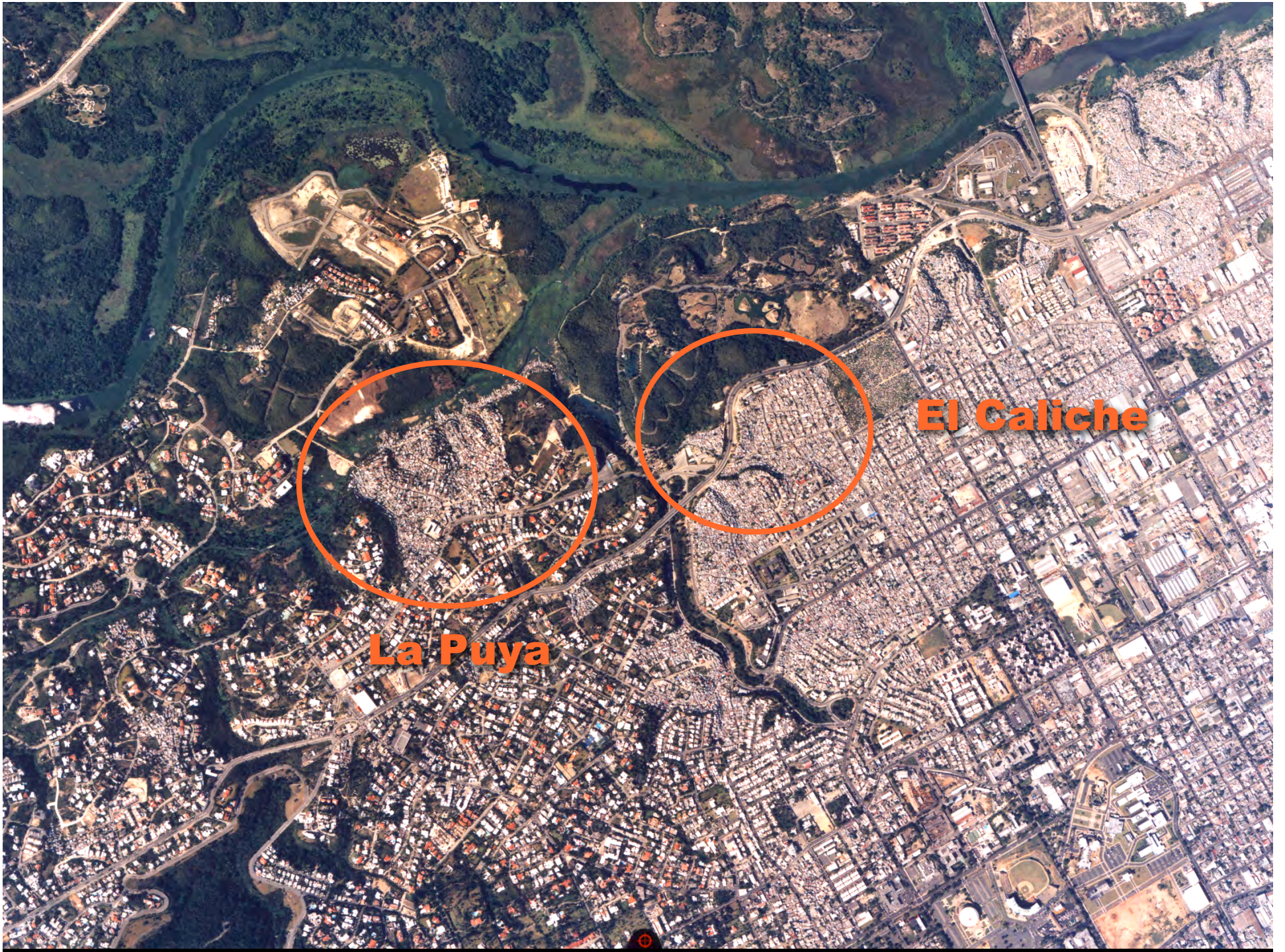
SIGUS-MIT Workshop January 2003
Santo Domingo



Workshop
Location

Original City founded
by Colombus

Ubicación en la Ciudad
Location in City



La Puya



El Caliche

Workshop Schedule



Arrivals

8:00
Welcome Reception
Old City Hall

	Monday 6	Tuesday 7	Wednesday 8	Thursday 9	Friday 10	Saturday 11
	Understanding the Context		Introductions	Listening to Families/Listening with different eyes		
	9:00 • Tour of Santo Domingo: Housing Typologies and City Sectors <i>“Getting comfortable with the city”</i>	9:00 • Background presentations: - Master Plan of city - NGO structure and project example - Public sector housing - Historic growth of city • Visit city planning offices • Set-up workspace	9:00 • Introduction to communities: walk-through by all teams with NGO hosts • First Impressions	9:00 • Selection of families by teams and NGO hosts • Interview families - Oral histories of family trajectories linked to dwelling growth - Documentation of dwelling growth - Capturing different views: Through community mapping Through children’s eyes Through settler photos		9:00 • Summary
Sunday 12	Monday 13	Tuesday 14	Wednesday 15	Thursday 16	Friday 17	Saturday 18
	Reflection	Addressing Issues		Presentation		Research ->
OPEN	9:00 • Assessing issues <i>What we see, What they say</i> 2:00 • Summary of Problems and Opportunities	9:00 • Identification of needs, priorities. • Identification of projects/programs	9:00 Development of proposals: - Main issue - Immediate action ‘catalyst’ initiative	2:00 Prepare for presentation Trial presentation	2:00 Final Presentation <i>Evening</i> Closing Reception	Start Individual Field Research

Note: Each day starts with joint meeting to review and discuss day’s tasks, and ends with joint debriefing meeting.

La Puya Squatter Community





Vistas de La Puya



Vistas de La Puya

El Caliche

Squatter Community





Vistas de El Caliche



Vistas de El Caliche

Amarrando el Futuro para El Caliche

Canalización de Medios de Empleo para sus Residentes

SIGUS-MIT TALLER E NERO. 2000

AMELIA CABRAL AMANDA IKERT TRACY SAYEGH
 JUSTIN CRANE YURI LEONARDO SUSANNE SEITINGER

EL CALICHE EDUCACIÓN LA CLAVE DE UN CALICHE FUERTE

Equipo

Abdiase Jean Adolfo Nadal
 Andrea Hagn Gregory Salandy
 Ian Finlayson Sabrina Lahoz

SIGUS-MIT TALLER ENERO 2003

Projects

LAS CAÑADAS DE LA PUYA: Inundaciones... Saneamiento

GRUPO LA PUYA 2

James Alexander
 Meredith Atkinson
 Elizabeth Bast
 Bianca Damiano Blonda
 Virginia Camilo
 Michael Lehner
 Giancarlo Troncoso

SIGUS-MIT JANUARY WORKSHOP 2003

E
L
E
Q
U
I
P
O

¡LA PUYA PUEDE!

ACCION CONTRA LA BASURA

Susana Williams - mit
 Jordan Kanter - mit
 Jean Walsh - mit
 Elisa Zapico - tub
 Oya Kujichagulia - unphu
 José Adolfo Jiménez - unphu
 Ico Abreu - unphu



UNPHU-MIT-TUB. PROYECTO PARA EL BARRIO DE LA PUYA. ¡LA PUYA PUEDE!

SIGUS JANUARY WORKSHOP 2003